

BDAS, LLC

2018

**ANALYTICAL
SERVICES CATALOG
PRICE LIST ONLY**



Brewing and Distilling Analytical Services, LLC

BDAS, LLC is a triple TTB Certified Laboratory: Beer, Wine and Spirits
And recognized in many Countries for Export Certificates - See Details Within.

THE 2018 CATALOG PRICE LIST ONLY COPY

CATALOG PRICE LIST

Key to symbols and the team 1

Catalog codes: Additional charges,
discounts & consulting 2

TESTS/PACKAGES:

Comprehensive analytical packages 3-4

Nutritional test packages 5-6

Individual tests 7-8

GC - Gas chromatography 9

Microbiological test services 10

Water, metals & minerals 11

Malt & hops 12

B - BEER/WORT

W - WINE

S - SPIRITS/[COCKTAILS]

C - CIDER

K - KOMBUCHA

**FMB - [Flavored Malt
Beverages]**

Tests applying to the specific classes of alcoholic beverage are indicated by those color-coded letters noted above.

Note: If a specific test applies to ALL products no code appears under the catalog number column.

ADDITIONAL COSTS:

Additional processing costs may be incurred.
These are noted on page 2.

YOUR TEAM FOR CHEMICAL, MICROBIOLOGICAL, NUTRITIONAL AND SENSORY SERVICES



Jessi Bentley, B.Sc. Chemist - General and HPLC Services. Email: jessi@alcbvtesting.com

Matt Linske, B.Sc. BDAS, LLC Manager & Lead Microbiologist (Bug Detective & Brewer).

Email: matt@alcbvtesting.com

Philip Gennette, B.Sc. Lab Manager & Lead Chemist - GC Services. Email: philip@alcbvtesting.com

Gary Spedding, Ph.D. Owner, Biochemist, Analytical Chemist and Sensory Specialist.

Email: gspedding@alcbvtesting.com

This document (18-1.4, 04-30-2018) is available to download: <http://alcbvtesting.com/catalog-and-testing-facilities/>

ITEM CODE	ADDITIONAL CHARGES/PACKAGE DISCOUNTS APPLIED TO TESTING & OR ADDITIONAL REPORTS	PRICE \$
F1	PRIORITY SERVICE FEES Rush services charges: 1.5 x's cost for 48 hours turnaround when possible. In house tests only.	1.5X
F2	DISTILLATION SERVICE FEE Samples to be distilled for analysis. Required for all samples above 12% ABV. Tests where this fee may apply are marked with*.	35
F3	PRE-ANALYSIS SAMPLE PROCESSING FEE Samples requiring filtration or clarification prior to analysis.	10
F4	SAMPLE EMULSIFICATION FEE Solid samples requiring grinding and emulsification prior to analysis	30
F5	ADDITIONAL REPORTS Extra reports or reports re-issued at a later date. Re-named samples - reports only reissued on samples tested in previous 12 months - see page 5.	20
F6	CERTIFICATE OF ANALYSIS NOTARY DOCUMENTS Any special certificate document - prepared and notarized.	25
F7	SAMPLE PURCHASE OR PICK UP FEES Purchase of samples/pickup fees, import fees etc., as required for testing. May include hourly rates for transport/travel time.	---
F8	RUSH SHIPPING/MAILING COSTS/OTHER DOCUMENT PROCESSING FEES Rush shipping/mailing of documents, return of samples etc., as instructed or needed. May also include other processing/document preparation fees, etc.	---
F9	SPECIFIC GRAVITY (SG) DETERMINATION FOR SERVING SIZE CONVERSION Some tests for nutritional items and certain other analytes will require a determination of the sample specific gravity for serving size conversion. The SG testing will automatically be added if needed - see catalog codes marked #.	20
F10	LANGUAGE TRANSLATION FEES FOR REPORTS Requests for reports written in a non-English language may involve translation fees. Translation is done digitally and may have contextually grammatical issues.	25
F11	LATE FEES Late fees at current standard industry rates (specified on the invoice) apply to invoices not paid within the current NET 15 days payment terms.	---

ITEM CODE	PROJECTS AND CONSULTING	
	CONSULTING	
CF	Consulting charges start at \$150/hour and include travel and accommodation costs etc., when applicable off-site work is involved. Contact us for full details. Also see page 19. Extended phone conversations where we add value beyond test result explanations are also considered under consulting arrangements.	
	PROJECT CONTRACTS	
PF	Special projects agreed to by both parties will incur project-specific charges. Basic project fees start at \$100/hour for set up and research work (See also retainer fees, RF below). Specific materials required will be purchased and billed for as will time spent collecting or delivery of samples etc. Contact us for full details. See also pages 19 and 20.	
	LEGAL RETAINER AND EXTENDED PROJECT DEPOSITS	
RF	Extensive projects and certain legal cases will incur retainer fees dependent upon the estimated total project or case research and reporting costs.	

TEST ITEM & KEY SYMBOL CODES - SEE PAGE 6	COMPREHENSIVE PACKAGES & BASIC/LEGAL NOTARIZED ALCOHOL REPORTS	PRICE \$
C1 *	ALCOHOL BASIC Alcohol by Volume at 20 °C and 60 °F and SG - see C2 for “legal values”. 1 Bottle or can	30
C2 *	ALCOHOL-LEGAL CONTENT Certified and notarized report of alcohol content - Alcohol % Volume and Weight at 20 °C and 60 °F and SG. 1 Bottle or can	50
C3 B * ~	BREWER'S SPECIFICATIONS (BEER) Alcohol By Volume and Weight, Extracts, Calories, IBUs, Color and pH. 1 Bottle or can (2 preferred)	85
C4 K C FMB * ~	NON-BEER SAMPLE BREWER'S SPECIFICATIONS Alcohol By Volume and Weight, Extracts, Calories, Total Acidity, Color and pH. Kombucha, Cider & Flavored Malt Beverages 1 Bottle or can (2 preferred)	85
C5 B * ~	BEER COMPREHENSIVE CHEMICAL PROFILE Alcohol By Volume and Weight, Attenuation, Bittering Units, Calories, Color, Dissolved CO ₂ (without air), Free Amino Nitrogen (FAN), Original and Final Extract, pH, Haze, Sediment analysis, Total Acidity and Total Sulfur Dioxide. 6 Bottles or cans	245
C6 B * ~	BEER COMPREHENSIVE CHEMICAL & SENSORY PROFILE Combines the C5 chemical package with one full sensory panel evaluation - see C11. 8 Bottles or cans	330
C7 B Wort ~	WORT COMPREHENSIVE CHEMICAL ANALYSIS Ash, Bittering Units, Calcium†, Color, FAN, Iron†, Magnesium†, SG, Original Extract, pH, Protein†, Starch Content (Quantitative), Total Acidity and Zinc†. SG is tested to see that fermentation is not underway before other tests commence. SHIP FROZEN! 1 Liter (or 2 x 500 mL)	290
C8 W ~	WINE COMPREHENSIVE CHEMICAL PROFILE Alcohol By Volume and Weight at 60 °F & 20 °C, Ash, pH, Sulfur Dioxide – Free, Fixed, and Total, Acidity - Volatile and Total, and Residual Extract. 1 x 750 mL Bottle (min)	175
C9 S	DISTILLED SPIRITS COMPREHENSIVE CHEMICAL PROFILE Alcohol By Volume and Weight, Acidity - Volatile and Total, Color, Higher Alcohols and Esters via GC, pH, and Residual Extracts/Total Solids. Need a notary document? Add code F6. 1 x 750 mL Bottle (min)	250
See key on page 1 for full details on symbols.		CONTINUED

FOR SPECIFIC CERTIFICATES FOR EXPORT PURPOSES IT IS SOMETIMES NECESSARY TO BUILD SPECIAL PACKAGES. PLEASE SEEK THE PACKAGE THAT BEST MEETS YOUR NEEDS & CONTACT US TO ADDRESS THE MISSING ITEMS FROM YOUR LIST. SEE ALSO PAGE 9 FOR ANEXO CERTIFICATES

CODES: BEER WINE SPIRITS CIDER KOMBUCHA FMBs NO CODE = ALL SAMPLES

TEST ITEM & KEY SYMBOL CODES - SEE PAGE 6	COMPREHENSIVE PACKAGES & BASIC/LEGAL NOTARIZED ALCOHOL REPORTS	PRICE \$
C10 BWS	<p align="center">PRODUCT STABILITY TESTING</p> <p>Total plate counts, CO₂, Fermentation profile, pH, Color and Haze. 6 Bottles or cans</p>	CALL
C11 B Sensory ~	<p align="center">TASTE PANEL EVALUATION</p> <p>Single evaluations and multi-time/date testings. A full 40 attribute descriptive sensory profiling with radar (spider) and bar chart profiles and sensory summary. Additional dates for same product aging (e.g., 30, 60, 120 days) as desired. Each additional time point \$100 each. 2 Bottles or cans per evaluation date</p>	125 (1st) 100/ subsequent date tests
C12 Sensory	<p align="center">TRIANGLE TASTE TESTS</p> <p>For this and other forced-choice sensory tests please call for specifics. 6 Bottles or cans each sample & the control per evaluation</p>	175 per comparison

TEST ITEM & KEY SYMBOL CODES - SEE PAGE 6	NUTRITIONAL TEST PACKAGES & INDIVIDUAL SPECIALIZED NUTRITIONAL TESTS [INCLUDES FDA NUTRITIONAL MANDATE TESTS]	PRICE \$
N1 *	NUTRITIONAL LABEL PACKAGE Alcohol By Volume and Weight, Ash, Calories, Original and Final Extract, Protein†, and Total Carbohydrates. <i>2 Standard Bottles/Cans</i>	160
N2 *	NUTRITIONAL LABEL PACKAGE WITH SODIUM As for N1 plus Sodium†. <i>2 Standard Bottles/Cans</i>	195
N3 *	NUTRITIONAL LABEL PACKAGE WITH HPLC SUGARS As for N1 plus HPLC Sugars (Glucose, Fructose, Maltose, Sucrose and Lactose)†. <i>2 Standard Bottles/Cans</i>	250
N4 *	NUTRITIONAL LABEL PACKAGE WITH SODIUM & HPLC SUGARS As for N1 plus Sodium and HPLC Sugars (Glucose, Fructose, Maltose, Sucrose and Lactose)†. <i>2 Standard Bottles/Cans</i>	290
N5 *	NUTRITIONAL LABEL PACKAGE WITH SODIUM, HPLC SUGARS & FATS As for N1 plus Sodium†, HPLC Sugars (Glucose, Fructose, Maltose, Sucrose and Lactose)† and Total Fats†. <i>3 Standard Bottles/Cans</i>	305
FDA PROGRAM FOR BREWERS	N6 COMPLETE NUTRITIONAL LABEL PACKAGE [FDA NUTRITIONAL MANDATE] As for N1 Plus, HPLC Sugars (Glucose, Fructose, Sucrose, Maltose and Lactose)†, Sodium†, Total Fat† and Total Fiber†. NOTE: A Fatty acids/Lipids profile, including cholesterol, is added on at a reduced price of \$300.00 if total fats from N6 proves to be > 0.5%. See N12 for stand-alone fatty acids/lipids profile. CALL FOR DETAILS. MUST REQUEST BOTH N6 and N12 For FDA MANDATED TESTING. <i>4 Standard Bottles/Cans</i>	500
N7 *	N7 FERMENTATION PROFILE Alcohol By Volume and Weight, Real and Original Extracts, Real and Apparent Degrees of Fermentation/attenuation, Ash and Calories. <i>[Spirits: calories and Er - Real Extract only.]</i> <i>1 Standard Bottle/Can</i>	50
N8	N8 ASH Total Inorganic (mineral) content via evaporation and combustion. <i>1 Standard Bottle/Can</i>	50
N9 #	N9 PROTEIN Total Protein via Kjeldahl digestion†. <i>1 Standard Bottle/Can</i>	50
N10 #	N10 HPLC SUGARS – SIMPLE SUGARS PROFILE Simple Sugars Profile: Glucose, Fructose, Sucrose, Maltose, Lactose† <i>1 Standard Bottle/Can or 150 mL Wort</i> CALL FOR CURRENT PRICING - WILL BE REDUCED WHEN SET UP IN-HOUSE AFTER MAY 2018	125 5PRICING WILL BE REDUCED IN LATE 2018

See key on page 1 for full details on symbols.

CONTINUED

SEE PAGE 11 FOR MORE DETAILS ON THE FDA & KOMBUCHA NUTRITIONAL MANDATES & PROGRAMS

CODES: BEER WINE SPIRITS CIDER KOMBUCHA FMBs NO CODE = ALL SAMPLES

TEST ITEM & KEY SYMBOL CODES - SEE PAGE 6	NUTRITIONAL TEST PACKAGES & INDIVIDUAL SPECIALIZED NUTRITIONAL TESTS [INCLUDES FDA NUTRITIONAL MANDATE TESTS]	PRICE \$
N11 #	TOTAL FATS (VIA ACID HYDROLYSIS) Total Fats analysis via acid hydrolysis.† 1 Standard Bottle/Can	50
N12	FAT/LIPID PROFILE Total, Saturated, Unsaturated and Trans fat, Cholesterol and including a Full Lipid profile. Mandatory for nutritional labeling on all samples containing more than 0.5% total fats. See N6 and note reduced price with N6 if this testing is needed]† ONLY \$300 if an add-on to N6. 1 Standard Bottle/Can	325
N13 #	TOTAL FIBER Total Dietary Fiber via enzymatic and gravimetric method.† 1 Standard Bottle/Can	210
N14 #	FIBER: SOLUBLE AND INSOLUBLE A Total Dietary Fiber test with soluble and insoluble forms reported.† 2 Standard Bottles/Cans	350
N15 #	VITAMINS Most vitamins can be tested for but please call for pricing as each vitamin is specifically priced.† Some products coming under more regulatory scrutiny for vitamin content. 1 Standard Bottle/Can	CALL

See key on page 1 for full details on symbols.

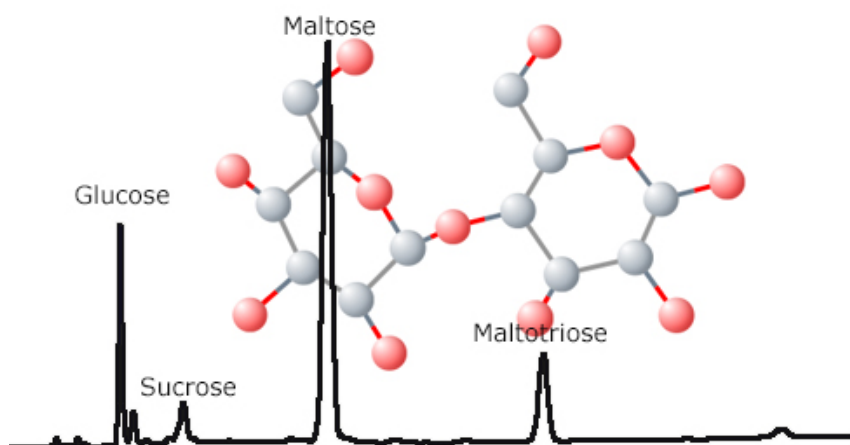
TEST ITEM & KEY SYMBOL CODES - SEE PAGE 6	INDIVIDUAL ANALYTE TESTS	PRICE \$
T1	BITTERNESS IBU's - spectrophotometric via iso-octane extraction	40 1 Bottle/can
T3 #	ENZYMATIC TESTS [SUGARS, ACIDS, ALCOHOL etc.] In 2017 we moved away from enzymatic testing except in special circumstances where a single analyte value is requested, is not covered under other test methods, and is open to enzymatic testing. These tests only added on when part of additional testing here at BDAS, LLC. A minimum of five samples is usually required to cover cost. NON-RUSH TESTING ONLY!	CALL
T4 B S	COLOR Spectrophotometric - Beer at A ₄₃₀ Spirits at A ₈₂₅ Std. Ref Method units.	20 1 Bottle/can
T5 B C K	DISSOLVED CO₂ Volumes of Dissolved CO ₂ (Zahm and Nagel)	45 2 Bottles/cans
T6 B C	DISSOLVED CO₂, AIR AND HEADSPACE Volumes of Dissolved CO ₂ with Air and Headspace determination [Content of CO ₂ by weight also possible - required for some cider regulations]	CALL 2/3 Bottles/cans
T7	FILL VOLUME CONFIRMATION Bottles or Cans [Density and sample container weights determined for assessments.]	50 2-4 Bottles/cans
T8 B W	FAN (ORYAN) Free Amino/Yeast Assimilable Nitrogen (ninhydrin-spectrophotometric).	45 100 mL
T9 New	CAFFEINE HPLC [Now established in-house]	150 100 mL
T10	GLUTEN QUANTITATIVE Quantitative via Ridascreen Gliadin ELISA test†	125 1 Bottle/can
T11	HAZE TESTING Sample Haze/clarity determination (NTU's or EBC units).	25 1 Bottle/can
T13	pH Standard reference method (SRM) - pH meter.	10 1 Bottle/can or 100 mL wort
T14 B	POLYPHENOLS Total (colorimetric - spectrophotometric).	40 1 Bottle/can
T15 S W	PROOFING: TRUE AND APPARENT PROOF & OBSCURATION VALUE Requires Distillation. (27CFR 30.32.) SEE PROOF OBSCURATION CHART ON PAGE 14	90 1 x 750 mL Bottle
T18	SPECTROSCOPIC FINGERPRINTING OF SAMPLE UV-visible scan - 220 to 1000 nanometers.	50 50 mL

See key on page 1 for full details on symbols.

CODES: **BEER WINE SPIRITS CIDER KOMBUCHA FMBs** NO CODE = ALL SAMPLES

TEST ITEM & KEY SYMBOL CODES - SEE PAGE 6	INDIVIDUAL ANALYTE TESTS	PRICE \$
T19 B W C	SORBIC ACID - HPLC Sorbic acid. 1 Standard Bottle/Can or 150 mL Wort	100
T20 B	SULFUR DIOXIDE (SO₂ - SULFITES) TOTAL Pararosaniline - spectrophotometric. 1 Bottle or can	75
T22 W S	SULFUR DIOXIDE (SO₂ - SULFITES) (FREE AND TOTAL) Aeration/Oxidation Method. 1 Bottle or can	75
T24	TITRATABLE ACIDITY Expressed as lactic in beer, tartaric in wine & acetic in spirits. Needs SG. in beer tests. 1 Bottle or can	25
T25 C S W	VOLATILE ACIDITY Expressed as acetic, unless otherwise specified. 1 Bottle or can	75
T28 B	WORT AND BEER DEXTRINS PROFILE - HPLC † Dextrin profile. Glucose, maltose, maltotriose, tetraose and pentaose (G1-G5). 1 Standard Bottle/Can or 150 mL Wort	135
T29 B W C K	ORGANIC ACIDS - HPLC † Acetic, butyric, lactic and propionic. 1 Standard Bottle/Can or 150 mL Wort	170

See key on page 1 for full details on symbols.



TEST ITEM & KEY SYMBOL CODES - SEE PAGE 6	GC - GAS CHROMATOGRAPHY	PRICE \$
GC1	INDIVIDUAL ANALYTE Any one currently tested analyte from GC2 [Higher alcohols and esters]. 100 mL	75
GC2 *	HIGHER ALCOHOLS AND ESTERS “The “TTB-series”: Acetaldehyde, Ethyl Acetate, Methanol, n-Propanol, Isobutanol, 1-Butanol, Active and Isoamyl Alcohols (“Fusel oils”), Furfural. Beer and samples over 10 Plato (Brix) extract require distillation. Type of sample must be indicated on the sample submission form. 1 Std. Container	125
GC3	DIACETYL (VDK’S) Vicinal Diketones [2,3-butanedione (DIACETYL) and 2,3-pentanedione] Total values reported. Call with any questions. 1 Std. Container	100
GC4 *	ALCOHOLS/ESTERS/DIACETYL Combination of GC2 and GC3. Special combined package pricing. 2 Std. Containers	200
GC5	NEW ANALYTE/METHOD DEVELOPMENT Call to establish analytes of interest. CALL	CALL
GC6	PROJECT GC PROPOSALS BDAS, LLC participates with a number of research and analytical groups to Test beverages via GC and GC-Mass Spectroscopy. Fully quantitative and qualitative profile options available. Contact Philip for details.	CALL

* Price includes the distillation cost. See Page 2.

Other tests are available upon request. Items illustrated above are those most commonly requested.

For GC Codes Specify matrix: Beer, Wine or Distilled Spirit.

APPLIES TO ALL: BEER WINE SPIRITS CIDER KOMBUCHA FLAVORED MALT BEVERAGES

TEST ITEM & KEY SYMBOL CODES - SEE PAGE 6	MICROBIOLOGY	PRICE \$
MC1	TOTAL PLATE COUNT Total Plate Counts on 5 media (aerobic and anaerobic). General descriptors of cell morphology included. 2 Bottles or cans*	125
MC2	FAME ANALYSIS† Fatty acid methyl ester profile analysis for Yeast Strain Identification. Isolated colonies only	175
MC3	PCR ID† Species identification via DNA sequencing - Isolated colonies only. Isolated colonies only	175
MC5	BEER SPOILAGE BACTERIA SCREEN Presence/Absence detection of 31 bacteria, including <i>Lactobacillus</i> , <i>Pediococcus</i> , <i>Pectinatus</i> , and <i>Megasphaera</i> species, as well as Hop resistance Genes horA and horC. 1 Bottle or can*	1st SAMPLE \$120 Additional samples \$80 each
MC6	BEER SPOILAGE YEAST SCREEN Presence/Absence detection of 30 yeast, including <i>Brettanomyces</i> , <i>Saccharomyces</i> , and <i>Zygosaccharomyces</i> species. 1 Bottle or can*	1st SAMPLE \$120 Additional samples \$80 each
MC7	SACCHAROMYCES CEREVISIAE VAR. DIASTATICUS ID Presence/Absence detection of <i>Saccharomyces cerevisiae var. diastaticus</i> , <i>Pichia anomala</i> , <i>Saccharomyces cerevisiae var. exiguus</i> , and <i>Schizosaccharomyces pombe</i> . 1 Bottle or can*	1st SAMPLE \$120 Additional samples \$80 each

Other tests are available upon request. Items illustrated above are those most commonly requested.

* Beer samples require at least two full bottles/cans. More sample may be required per specific growth conditions. Please call Matt for details.

APPLIES TO ALL: BEER WINE SPIRITS CIDER KOMBUCHA FLAVORED MALT BEVERAGES

TEST ITEM & KEY SYMBOL CODES - SEE PAGE 6	WATER & METALS/MINERALS PACKAGES & INDIVIDUAL TESTS	PRICE \$
WATER		

COMPREHENSIVE WATER ANALYSIS

W1	Alkalinity, Calcium, Chloride, Conductivity, Fluoride, Iron, Hardness, Magnesium, Manganese, Nitrate, pH, Sodium, Sulfate and Total Dissolved Solids [Some tests done off-site.†] Discussion of profiles available as to suitability for your process.	120
	2 Liters	

METALS & MINERALS†

MM1 #	METALS/ MINERALS 1 Calcium, Iron, Magnesium and Zinc.	125
	100 mL	

MM4 #	COMPLETE METALS AND MINERALS PACKAGE FOR WATER AND WORT NUTRITION: Calcium, Chloride, Copper, Iron, Magnesium, Manganese, Phosphorus, Potassium, Sodium, Sulfate and Zinc.	225
	200 mL	

SINGLE METAL OR MINERAL (TOTAL)

MM5 #	CATIONS: Choose from the following: Calcium, Copper, Iron, Magnesium, Potassium, Sodium and Zinc most commonly requested. ANIONS: Choose from the following: Chloride, Fluoride, Nitrate/Nitrite, Phosphate, Sulfur, Sulfate. SPECIFY EACH METAL OR MINERAL REQUIRED ON FORM Heavy metals such as arsenic, lead and mercury cost more - CALL FOR DETAILS	50 Each
	100 mL	

Metals and minerals (Inductively coupled plasma methods†). Most cations and anions. See below and call for items not listed. Tailored packages possible†.

For per serving size calculations the SG of the sample needs to be obtained. See F9 page 2.

METALS & MINERALS: Depending on the type of sample material, and the degree of “statistical sampling” needed, different amounts may be required for testing. Typically, though, about 0.1 L or 0.1 Kg would be required. If in doubt, please call. For other metals or minerals etc. STATE NAME ON FORM. All metals and minerals currently tested off-site.

Most packages can substitute the ion of choice though the price may change.

APPLIES TO ALL: BEER WINE SPIRITS CIDER KOMBUCHA FLAVORED MALT BEVERAGES

TEST ITEM & KEY SYMBOL CODES - SEE PAGE 6	MALT & OTHER CEREAL GRAINS BREWERS AND DISTILLERS	PRICE \$
MALT†		
M1	SIMPLE MALT ANALYSIS† Moisture, Extract and Color.	50 1Kg
M2	MALT ESSENTIALS† Moisture, Friability, Fine Extract, β-glucan, FAN, Diastatic Power (DP), α-amylase, color, filtration time, clarity and pH	100 1Kg
M3	MALT FULL COMPREHENSIVE † Moisture, Assortment, Friability, Fine Extract, Coarse Extract, F/C Difference, β-glucan, FAN, Soluble Protein, S/T, DP, α-amylase, Color, Filtration time, Clarity, pH and viscosity.	200 1Kg
M4	ENZYMES ONLY† Diastatic Power and α-amylase.	75 1Kg
M5	FRIABILITY ONLY† Leading indicator of malt quality.	25 250 g
M6	BARLEY QUALITY REPORT† A complete QC profile - call for details.	125 1Kg

Rush testing not available for off-site tests - indicated by† We now have two affiliate labs to test your malt and other cereal samples. Contact us for details.

TEST ITEM & KEY SYMBOL CODES - SEE PAGE 6	HOPS - WHOLE CONE OR PELLETS BREWERS	PRICE \$
HOPS		
H1 B	ALPHA AND BETA ACIDS CONTENT AND MOISTURE Spectrophotometric determination following extraction and also moisture content determination. Pellets \$60 . Whole cones \$85.	60/85 50 g
H2 B	MOISTURE Standard dry down and weight measurements.	20 50 g

See key on page 6 for full details on symbols.

PRICE LIST ONLY VERSION

**The Brewing and Distilling Analytical Services, LLC.
Sample Services Request Form can be Emailed to you or downloaded
from the website.**

SAMPLE SERVICES FORM:

<http://www.alcbevtesting.com/catalog-and-testing-facilities/>

SAVE DATA ENTERED INTO FORM BEFORE PRINTING OR EMAILING!

**AN ON-LINE-FILLABLE SAMPLE SERVICES REQUEST FORM MUST
ACCOMPANY ALL SAMPLES BEFORE WORK CAN COMMENCE -
NO EXCEPTIONS! CHAIN OF CUSTODY FORMS ALSO AVAILABLE
AS REQUIRED.**

**Brewing and Distilling Analytical Services, LLC
1141 Red Mile Road, Suite 202,
Lexington, KY, 40504
TEL: 859-278-2533**

www.alcbevtesting.com

**© 2018 BDAS, LLC & now BDES (Educational) Services
EDITION ©04/28/18**

**BREWING & DISTILLING
ANALYTICAL SERVICES LLC**



**The Power of Advanced Education from the Analytical
Team YOU Already Trust**